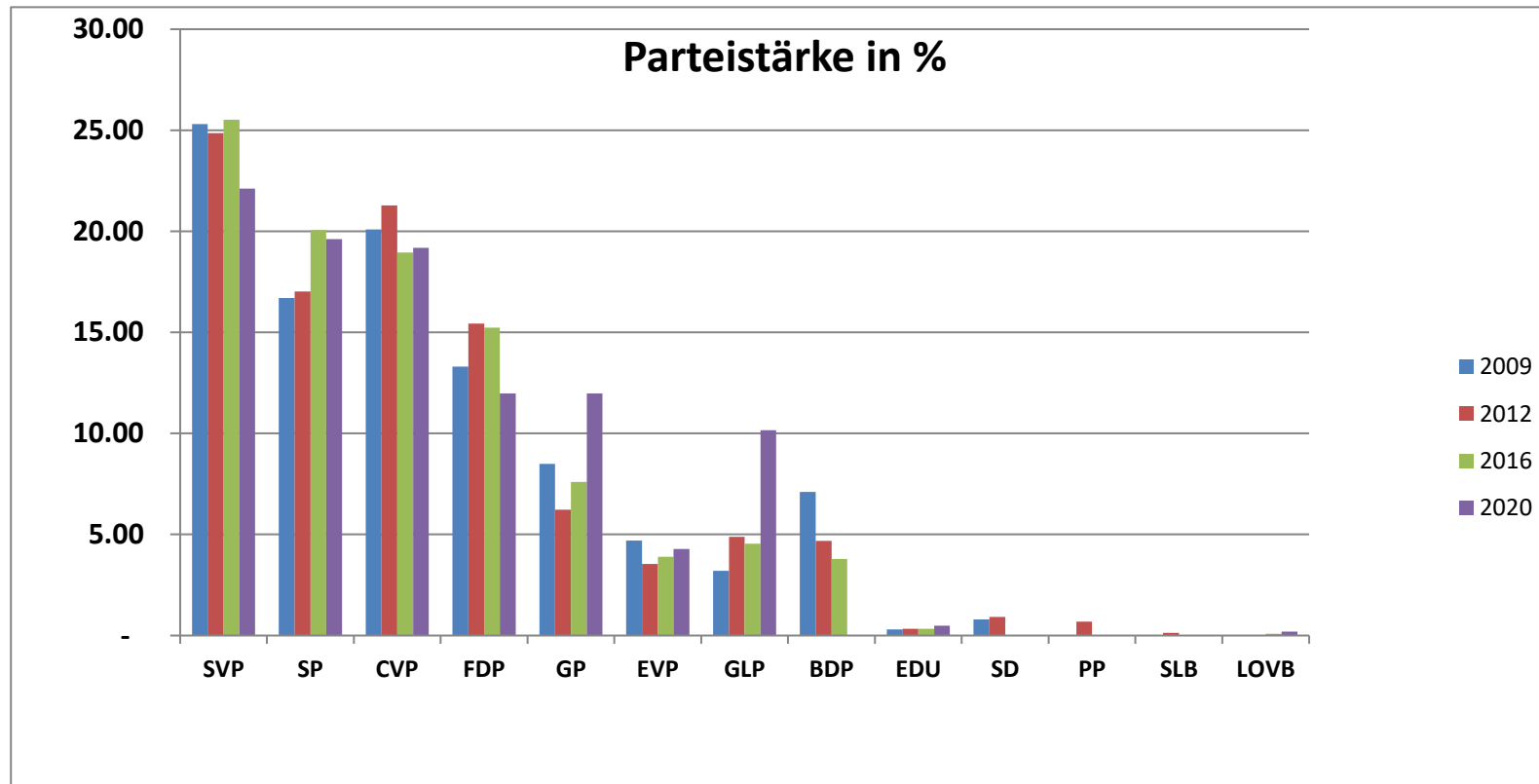


Grafik Grossratswahlen in Prozenten



Bezeichnung	in Prozenten				Stimmenzahlen				Veränderung
	2009	2012	2016	2020	2009	2012	2016	2020	
SVP	25.30	24.85	25.52	22.12	12'599	12'683	13'555	11'465	-3.40
SP	16.70	17.02	20.06	19.62	8'303	8'684	10'655	10'169	-0.44
CVP	20.10	21.29	18.95	19.18	9'993	10'863	10'065	9'943	0.23
FDP	13.30	15.44	15.23	11.97	6'604	7'878	8'089	6'206	-3.26
GP	8.50	6.22	7.60	11.98	4'217	3'174	4'034	6'210	4.38
EVP	4.70	3.55	3.89	4.28	2'325	1'811	2'068	2'221	0.39
GLP	3.20	4.88	4.54	10.16	1'590	2'489	2'413	5'265	5.62
BDP	7.10	4.68	3.79	-	3'534	2'386	2'011	-	-3.79
EDU	0.30	0.34	0.33	0.49	148	173	175	254	0.16
SD	0.80	0.92	-	-	506	472	-	-	-
PP	-	0.68	-	-	-	349	-	-	-
SLB	-	0.14	-	-	-	69	-	-	-
LOVB	-	-	0.09	0.20	-	-	45	102	0.10